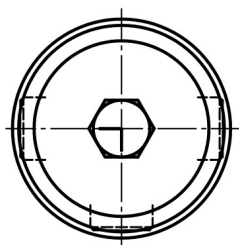
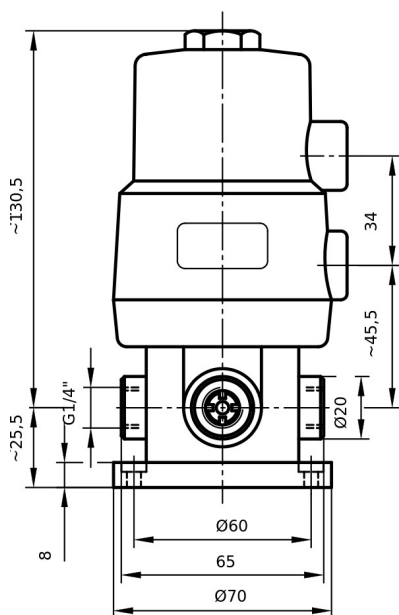




Illustration exemplary



All data in mm; Illustration exemplary

## 6D732F0614PPFK

Ball valve (Series 6D) with pneumatic part-turn actuator (STANDARD), spring return, with female G- or NPT-thread, 3-way, horizontal, with L-bore

### Technical data

Nominal Diameter	DN06 (*)
Connection	G1/4"
Material Body	PP
Material O-ring	FFKM
Material Ball	PP
Material Sealing Sleeve	PTFE
Material Pressure Screw	PP
Kvs Value	0.85 m³/h
Max. Media Temperature	90°C
Pressure Stage	PN10
Control Pressure	6 bar
Torque	2.5 Nm

Starting from the nominal pressure rating (at 20°C), the permissible pressure reduces with increasing media temperature.

(\*) Attention: with DN06 the inputs overlap during the rotary movement. Port isolation is only guaranteed when the end position is reached.