

Discover our range of tube-, pipe- and special connectors for the secure handling of aggressive liquid & gaseous media.

## Generation+

Defined stop for easy handling

### Connection Principle 1+

- for flexible tubes
- pressure stage PN 16

### Connection Principle 1B+

- for fabric-reinforced flexible tubes
- pressure stage PN 16

### Connection Principle 1W+

- for corrugated flexible tubes
- pressure stage PN 4

## Flexible Tubes

Screw connectors in proven quality

### Connection Principle 1A

- for flexible tubes
- pressure stage PN 10

### Connection Principle 1B

- for fabric-reinforced flexible tubes
- pressure stage PN 10

### Connection Principle 1C

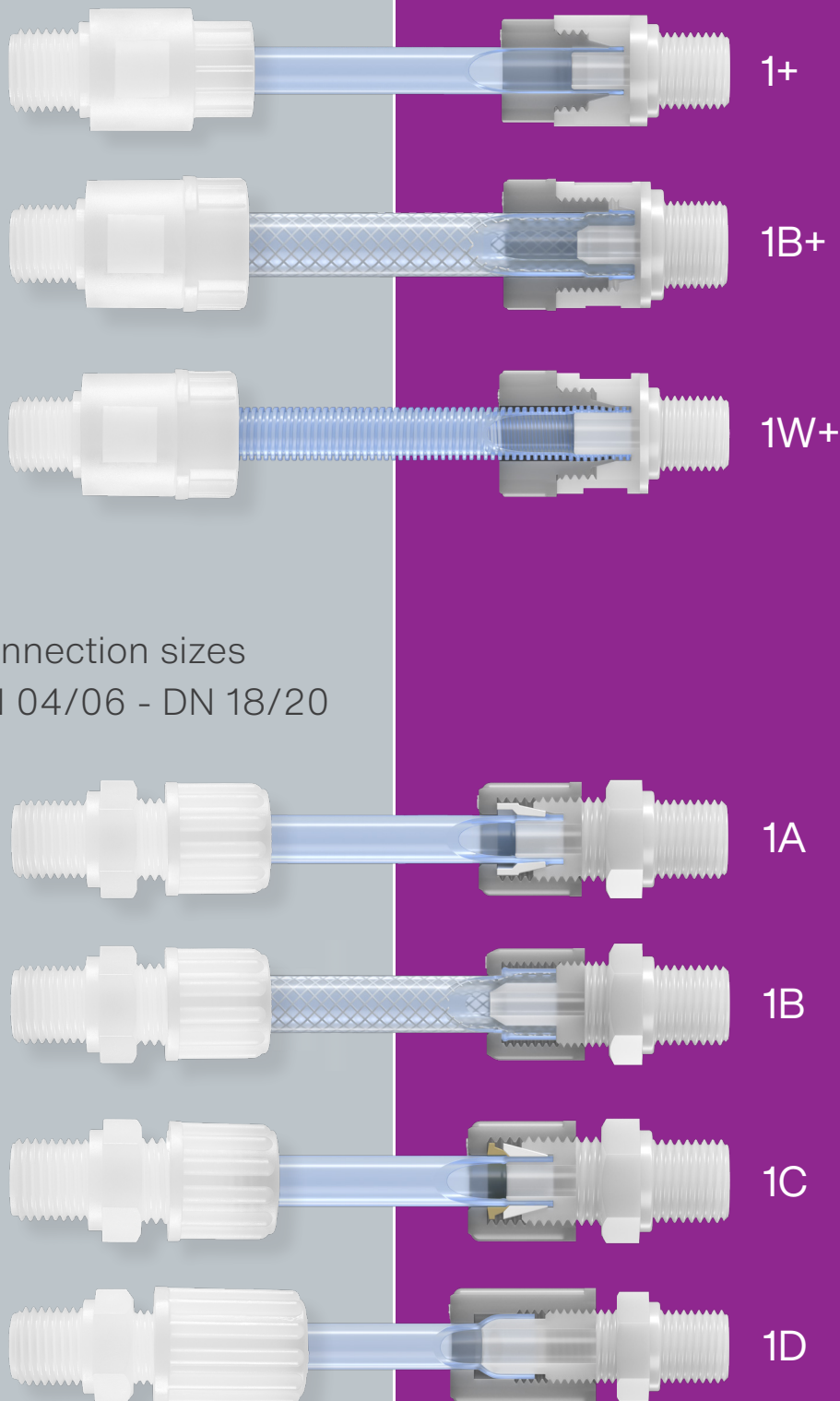
- for high-temperature applications
- double ferrule

### Connection Principle 1D

- for flare connections
- dead volume-free HP quality

Depending on material, area of use and industry-specific demands, there is a variety of connection principles to choose from.

Just two parts - the + for more safety



**emtechnik**

## Connectors Made of High-Tech Plastics

PP, Natural PP, PVDF, PFA

More detailed information and product animations

of our connection principles can be found online

[em-technik.com/connectionprinciples](http://em-technik.com/connectionprinciples)



# Pipes

Fittings without cross-sectional narrowing

For rigid hoses and pipes 1.6-25 mm

emtechnik

## Connection Principle 2N

- double ferrule
- pressure stage PN 10

## Connection Principle 2D

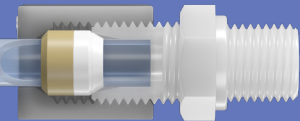
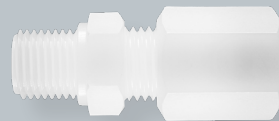
- for pipe feedthrough
- double ferrule

## Connection Principle 2M

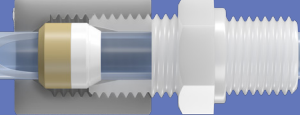
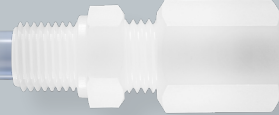
- specially for thin pipes
- pressure stage PN 1

## Connection Principle 2T

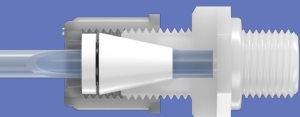
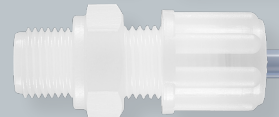
- for pipe feedthrough
- specially for thin pipes



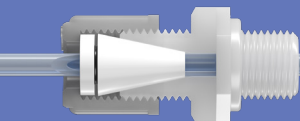
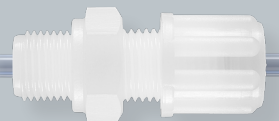
2N



2D



2M



2T

# Special Fittings

## Tri-Clamp-Connectors 3C

- connectors according to DIN 32676, ISO 2852, BS 4825

## Inlay Connectors 3E

- for direct connections according to DIN 8063

## Glas Thread Adapter 3G

- standard GL thread connection in accordance with DIN 168

## Welding Tube Adapter 3W

- for hose/pipe connections according to DIN ISO 10931

## Barb Connectors 3T

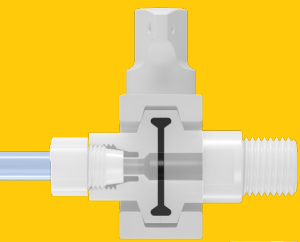
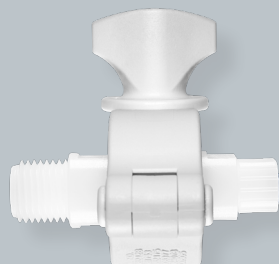
- easy installation by sliding on the hose

## Luer Lock Adapter 3L

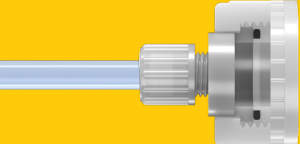
- Luer lock threads according to DIN EN ISO 80369-7

## Fittings 3F

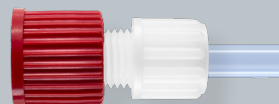
- screw plugs, nipples, sockets, elbow-, cross- and T-pieces



3C



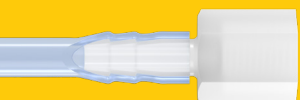
3E



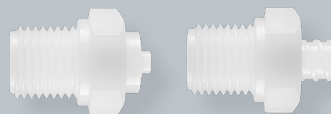
3G



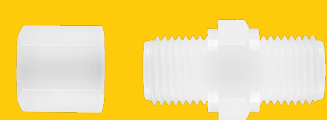
3W



3T



3L



3F

Find our wide range of more than 10,000 emtechnik

connectors & fittings and a product finder on our website

em-technik.com

